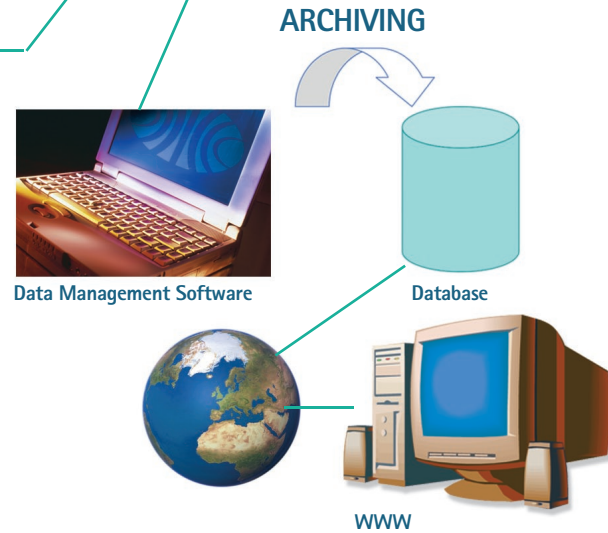
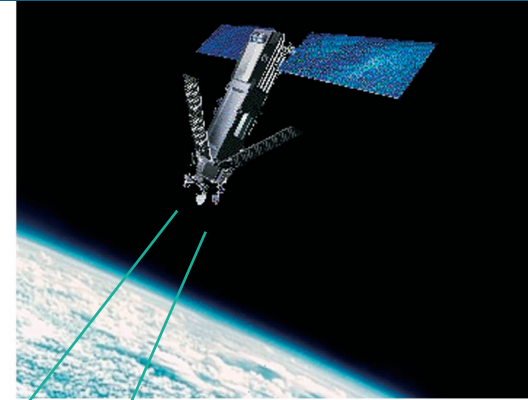


WebView™

Data Display Web Application

FEATURES & BENEFITS:

- Quick and easy installation
- Ability to view data anywhere, anytime
- Intuitive controls and layout
- Graphing capability includes:
 - Date and time range selections
 - Multiple y-axis/parameter support
 - Customizable axis ranges
 - Automatic graph update feature
- Fully modifiable layout
- Data export to MS Excel or CSV files
- Internet accessible
- Security options



WebView™

Ideal web application for the presentation and management of environmental data acquired from AXYS buoys and land stations around the world.

Providing web-enabled graphical data display, accessible anywhere, anytime

WebView™

WebView™ is an interactive web application used to display environmental data collected by AXYS Technologies Inc.'s (AXYS) Data Management System (DMS), or any other data collection system. Linked to the DMS database, WebView™ allows users to access their environmental data anytime, anywhere through an easy to use, web-based interface.

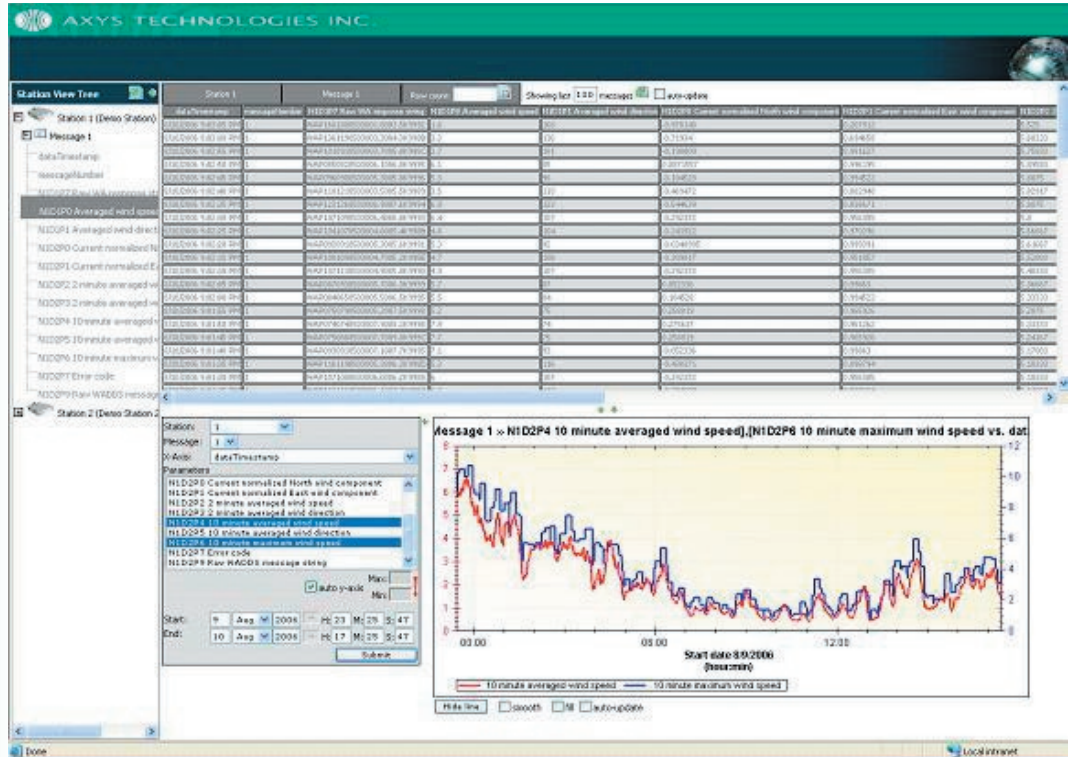
The AXYS WebView™ application is intuitive and requires minimal study. Most of the functions are point and click. The viewer includes zoom functions and the ability to graph multiple parameters and change legends, axes and scales to show only the data you wish to view. Views of both current data and historical data can be readily displayed, and are easily imported into windows spreadsheets and databases for further analysis.

The WebView™ interface can dynamically update data on a configurable interval, and reflect any sensor/station additions or removals. Because WebView™ is coupled with the DMS database, the user can view a completely different dataset just by editing a single configuration line on the web server. Captured data can be displayed in near real-time.

WebView™ allows users to easily configure the following features:

- Station – User can select which station out of the network is to be displayed.
- Message – Selected message type is displayed.
- Parameters – Select which fields are displayed in the graph. Multiple fields can be viewed simultaneously.
- Auto y-axis – Enabling this will automatically configure the range of the y-axis in the chart.
- Start and End times – Set the time range displayed in the chart.
- Smooth line – Display a smooth line trend.
- Hide line – Display only data points, no lines.
- Export Data – Users can export data into ASCII text format

WebView™ also includes security features to allow for varying degrees of access to multiple users.



AXYS WebView™ Software

Data is archived in real-time when received from the AXYS marine buoys and land stations. All data received by the DMS is archived in ASCII text format, delimited for importing easily into Windows spreadsheets and databases.

System Requirements

- Data specifications
 - Microsoft SQL Server 2000 or MSDE (Microsoft Data Engine)
- Installation specifications
 - Microsoft .NET Framework 1.1, 2.0
 - Internet Information Server (IIS) 5.0 or higher
- User Interface
 - Internet Explorer 5 or higher
- Network
 - Cable/DSL connection or better
- Windows 2000 or Windows XP Professional



AXYS TECHNOLOGIES INC.

P.O. Box 2219, 2045 Mills Road West, Sidney, British Columbia Canada V8L 3S8

Phone: (250) 655-5850

Fax: (250) 655-5856

E-mail: info@axystechnologies.com

Website: www.axystechnologies.com